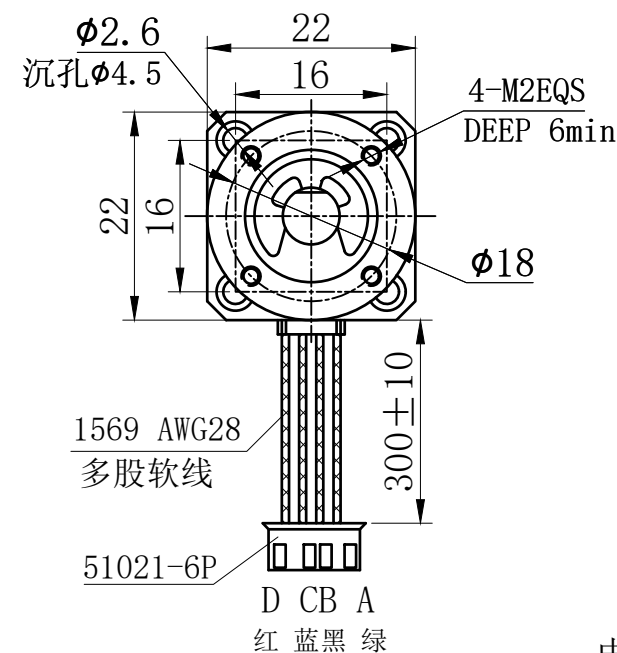
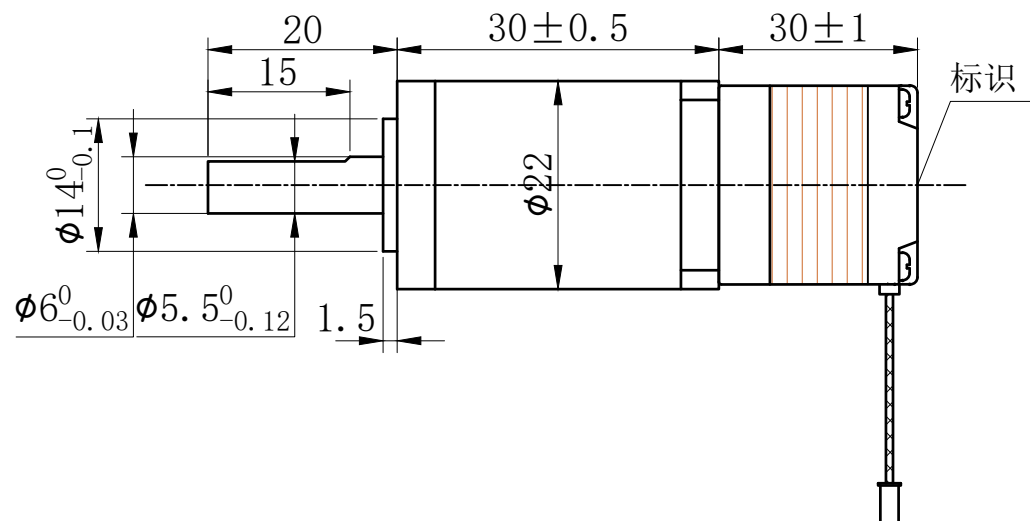


符合RoHS指令要求  
CONFORM TO RoHS DNSTRUCTIONS

A



B

A

B

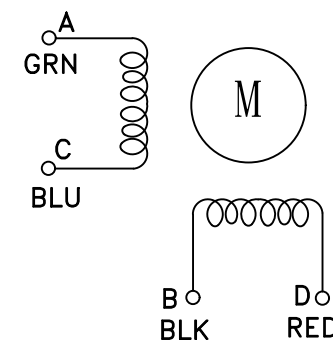
C

特性 <b>character</b>	规格 <b>specifications</b>
1. 相数 Number of phase	2
2. 步 距 角 Step Angle	1.8°
3. 额定电压 Rated Voltage	DC 3.25V
4. 额定电流 Rated current	DC 0.5A
5. 保持转矩 Holding Torque	≥ 15mN.m
6. 相电阻 Winding resistance	6.5±15% ohm(20℃)
7. 相电感 Winding inductaoce	1.5±20% mH (1kHz)
8. 转向 (轴伸向看) Direction of rotation	A-AB-B-CW
9. 转动惯量 Rotor Inertia	2 g.cm²
10. 电机重量 Weight	0.06Kg
11. 绝缘等级 Insulation class	B Class

減速比: 1/19

D

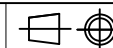
电气原理图  
winding drawing



C

D

# UMot

视图  
view

1 : 1

AO

重庆优摩特科技有限公司  
Chongqing UMot technology Co.Ltd.

型号 Model	20HS1405-22PG19J-300C
-------------	-----------------------